

172/35 Skennars Head Road Skennars Head

Table of Contents

- | [Property Details](#)
- | [Property Photos](#)
- | [Google Map - Property Location](#)
- | [Inspections](#)

Property Details



**172/35 Skennars Head Road,
Skennars Head**

SOLD BY THE WAL MURRAY TEAM

3  2  2  **\$550,000**

Located on a sought after corner position at the rear of the Park, stands this impressive, manufactured home that's sure to impress.

Light filled open plan living area with air conditioning and high ceilings

Well-presented kitchen with electric cooking, pantry and ample storage

Large master wing with ensuite, walk in robe and air conditioner

Two good size guest bedrooms - both with built-in robes

Light and airy guest bathroom with a bath, vanity and toilet

Large undercover verandah has drop down blinds for protection and privacy

Other features include solar panels, large undercover carport and storage shed

The park facilities include a large meeting room, solar heated indoor pool (residents only), solar heated outdoor pool with spa and children's wading pool, BBQ areas, playground with jumping pillow, games and TV room, undercover playground, boom gate security and local bus service

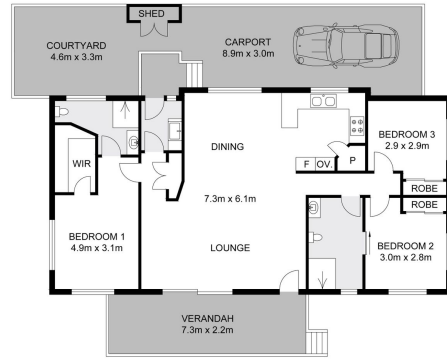
No stamp duty, no annual council rates, no body corporate fees & no exit fees. Centrelink subsidy may apply

Property Photos

Photo Gallery







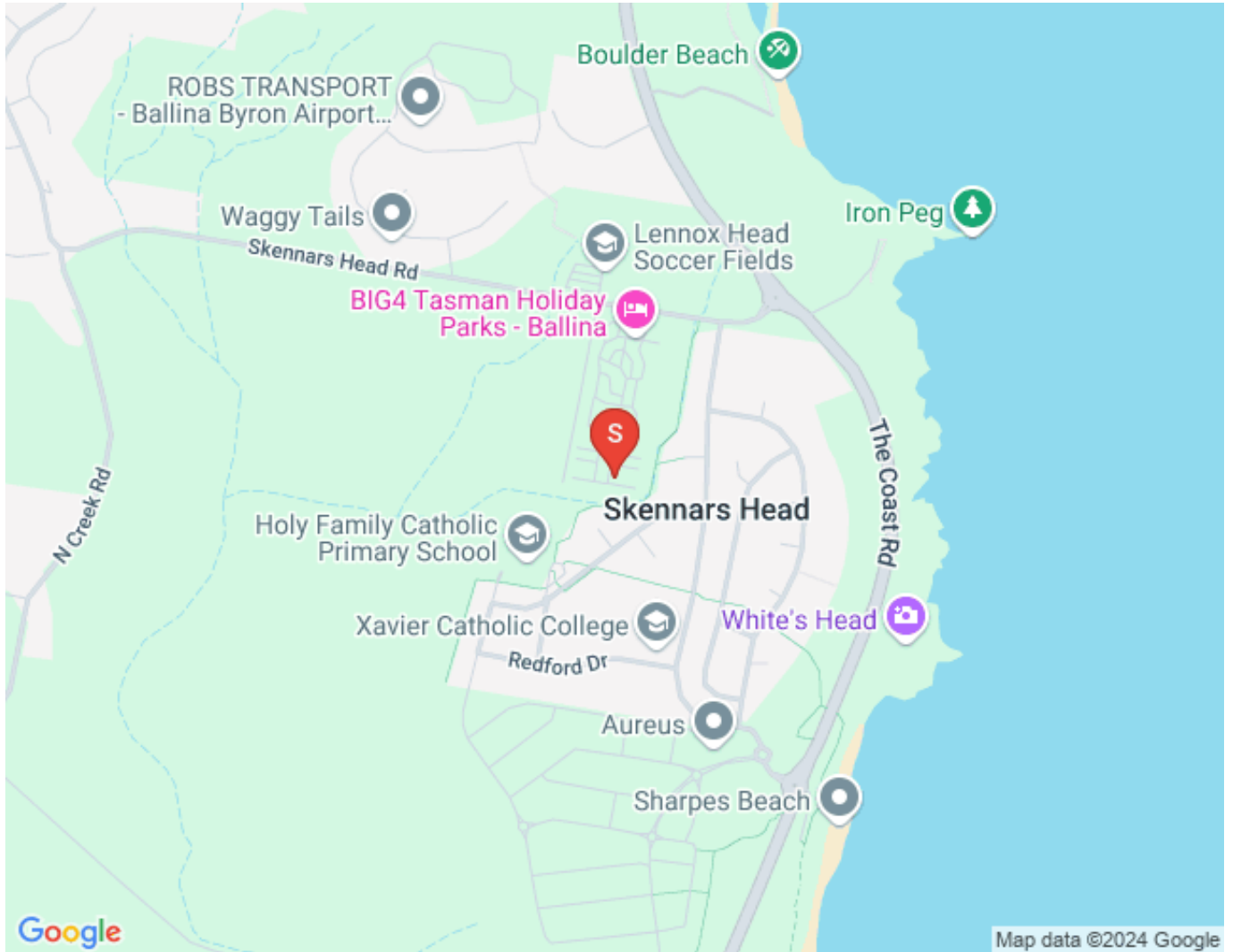
Dimensions are approximate. All information contained herein gathered from sources we believe to be reliable. However we cannot guarantee its accuracy and interested persons should rely on their own enquiries © visionmedia vision 2024.

INT : 103.5m²
 EXT : 35.1m²
 SHED : 0.9m²
 CARPORT : 26.5m²

172 Tasman Holiday Park, Skennars Head

Google Map - Property Location

Map



Inspections



JULIE CASEY

0404 008 834

julie@walmurray.com.au